

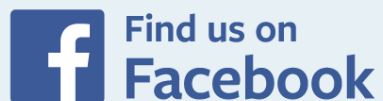
Church Council and Ministry Teams

The Council has responsibility for the oversight and development of all activities within Morialta Uniting Church. It is supported by the following Teams:

- Worship & Faith Education
- Pastoral Care
- Community Centre
- Property
- Finance
- Communication
- Administration

Church Council & Congregation Chairperson:
Bruce Ind

Church Council Secretary:
Rhonda Amber



A Safe Place

At Morialta Uniting Church we are committed to providing places where people are cared for, nurtured and sustained. We are committed to the care, protection and safety of all people, but especially of children and young people.

We seek to provide a safe environment for all people to encounter God, to grow in faith and to develop relationships as part of the community.



Morialta Uniting Church & Community Centre Vision Statement

Morialta Uniting Church seeks to be an inclusive community that holds to the way of Jesus, expressed through love, service and hospitality. We offer, for all ages, learning opportunities, spiritual expression, action for justice and social connection. We understand the Chapel Street properties to be a community resource.

Morialta Uniting Church Welcomes You



26 Chapel Street, Magill

PHONE: 08 8331 9344

EMAIL: office@morialtauca.org.au

WEBSITE: morialtauca.org.au

Church Office open Monday to Friday
9am—1pm

Living Streams ~ Giving Life



Morialta Uniting Church's Weekly Activities

We hope you enjoy participating in the life of this congregation. Worship is at the heart of our community life and there may be other ways in which you want to be involved. Please let us know of any areas which interest you.

Sunday	Worship Service 10:00am Coffee/Tea after worship
Monday	Japanese Playgroup Tai Chi
Wednesday	Community Shed
Thursday	Fellowship (monthly)
Friday	Coffee & Chat Art Circle Gateways—Exploring our Faith (2nd & 4th of the month)
Saturday	Netball / Social Tennis

Please ask for details and about small groups that meet at other times.

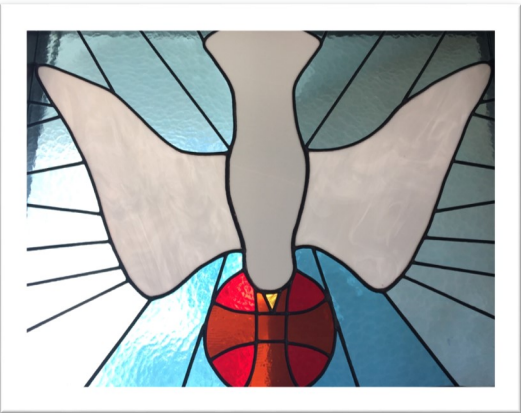
Pastoral Care

At Morialta, we care for each other through the 'Pastoral Partners Program'. We will discuss this with you and arrange for someone to be your pastoral partner.

Morialta's life and mission are enabled by the Stewardship/Giving of the church family.

Giving may be by one of the following:

- eGive—direct giving from your bank account (brochures available from office)
- Cash/Cheque in the collection bowl
- Weekly Offering Envelopes



Some information about you

This information is collected under our privacy policy and is used to assist in the provision of care and in sharing information about church activities.

Family Name:
.....

Given names:
.....

Family members: (please include ages of children)
.....
.....
.....
.....

Address:
.....
.....
.....

Telephone:
Home.....
Email.....

I would like to receive the Vision Magazine Y/N

I would like more information about the following activities:
.....
.....
.....
.....

Any other comments or requests:
.....
.....
.....
.....
.....
.....
.....